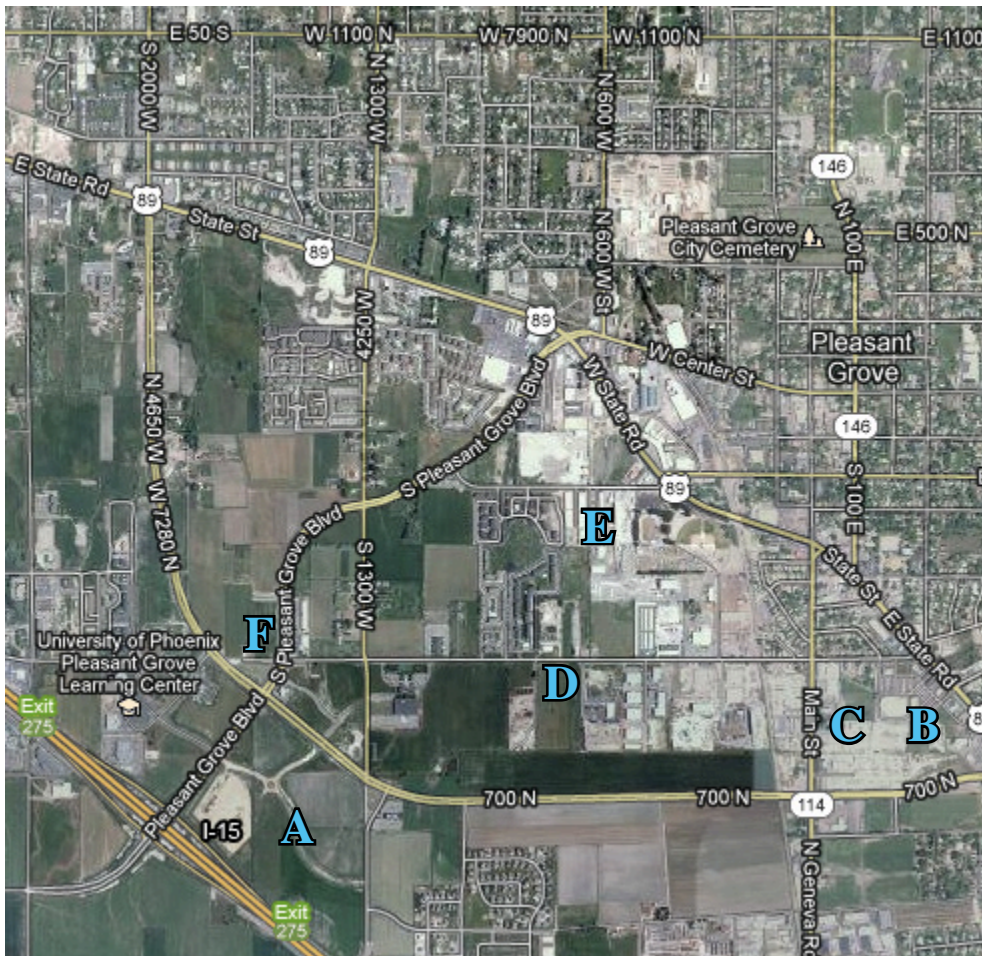


## Large Commercial Site



	Address	Size
A	<a href="#">I-15 &amp; Pleasant Grove Blvd</a>	130 Acres
B	<a href="#">882 South State St</a>	7.16 Acres
C	<a href="#">Village Square Land 882 South State</a>	7.16 Acres
D	<a href="#">PG Commercial Land 650 West 700 South</a>	5 Acres
E	<a href="#">Pre-Cast Concrete Production Plant 492-496 South 250 West</a>	6.41 Acres
F	<a href="#">700 Pleasant Grove Blvd</a>	8 Acres

Click on the address for website

### 2012 Demographic Snapshot

	3-mile radius	15-mile radius
Population	70,000	531,000
Median age	27	25
Avg. household income	\$74,000	\$80,000
Median home price	\$232,000	\$252,000
Pop. with college degrees	42%	24%
Growth rate 2000-2010	50%	43%
Source: Claritas	visit us on the web: <a href="http://PLGrove.org">PLGrove.org</a>	